



United States
Department of
Agriculture

National Institute
of Food
and Agriculture

An Overview of National Institute of Food and Agriculture (NIFA) and Institute of Youth, Family, and Community

Muquarrab A. Qureshi

FALCON, 10-29-2012



United States
Department of
Agriculture

National Institute
of Food
and Agriculture

WHO AM I ?

Academics: DVM, M.Sc., Ph.D. (Immunogenetics)

LGU: Cornell: 1981 – 85

NC State: 1987 – 2003

Professor : Immunology & Poultry Science

Director : Physiology & Poultry Science

Asso. Dean : Graduate School

USDA: 2003 : NPL – Genetics

2008 : Director - Animal Systems

2012 : Assistant Director IYFC



United States Department of Agriculture

National Institute of Food and Agriculture



BIOENERGY, CLIMATE, AND ENVIRONMENT



FOOD PRODUCTION AND SUSTAINABILITY



YOUTH, FAMILY, AND COMMUNITY



FOOD SAFETY AND NUTRITION



INTERNATIONAL PROGRAMS



USDA NIFA

NATIONAL INSTITUTE OF FOOD AND AGRICULTURE



United States
Department of
Agriculture

National Institute
of Food
and Agriculture

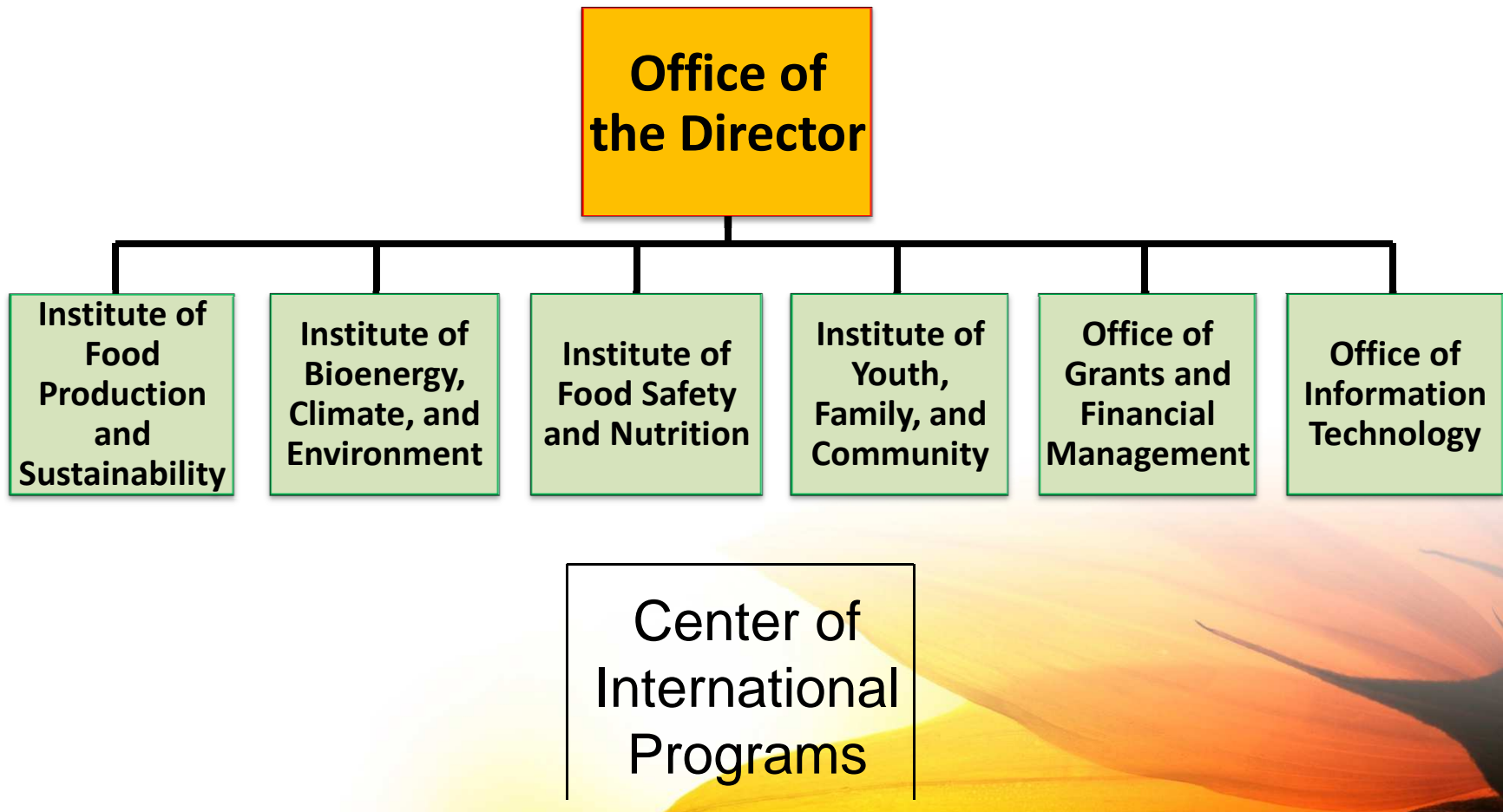
Background

- 2008 Farm Bill established the creation of NIFA
- NIFA's new structure fully implemented in 2010
 - 4 Institutes and a Center for International Programs



United States
Department of
Agriculture

National Institute
of Food
and Agriculture





United States
Department of
Agriculture

National Institute
of Food
and Agriculture

Institute of Youth, Family, & Community

Assistant Director: Muquarrab Qureshi

Division of Youth and
4-H
Lauxman

Division of Community
and Education
Smith (Acting)

Division of Family and
Consumer Sciences
Crocoll



TRIBAL PROGRAMS PORTFOLIO



United States
Department of
Agriculture

National Institute
of Food
and Agriculture

INSTITUTE OF YOUTH, FAMILY, AND COMMUNITY

TEAM

Timothy Grosser

Jill Lee

Joanne Brosh

Rhiannon Elms



United States
Department of
Agriculture

National Institute
of Food
and Agriculture

Some IYFC Statistics

- **55 Program Staff**
- **~30 Legislative Authority Programs**
- **Competitive, Formula, non-Competitive**
- **Our partners reported ~\$350M against 13 Knowledge Areas**



United States
Department of
Agriculture

National Institute
of Food
and Agriculture

LAND GRANT FAMILY

1862s

1890s

1994s

ANNH, Insular Areas

HSIs – HSACU

NARRUs



United States
Department of
Agriculture

National Institute
of Food
and Agriculture

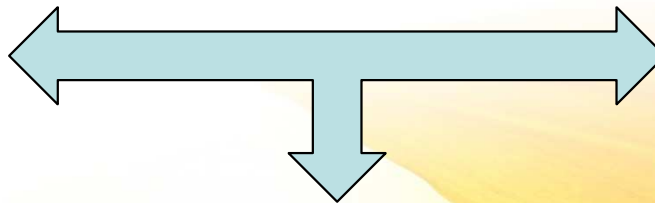
FUNDING Mechanisms

President's Budget

Formula + Targeted Programs + AFRI

Ave: ~\$750 M +

Ave: \$244 M



Request: ~\$1.3 B



United States
Department of
Agriculture

National Institute
of Food
and Agriculture

AFRI Total Investment and Planned Funding by Area (in millions)

	2010	2011	2012	Average
Foundational Program				
Plant Health and Production and Plant Products	\$ 17.3	\$ 10.7	\$ 28.9	\$ 19
Animal Health and Production and Animal Products	\$ 18.8	\$ 12.8	\$ 34.4	\$ 22
Food Safety, Nutrition, and Health	\$ 8.9	\$ 9.9	\$ 8.8	\$ 9.2
Renewable Energy, Natural Resources, and Environment	\$ 9.4	\$ 6.2	\$ 10.4	\$ 8.7
Agriculture Systems and Technology	\$ 6.9	\$ 5.4	\$ 7.6	\$ 6.6
Agriculture Economics and Rural Communities	\$ 10.8	\$ 11.8	\$ 9.6	\$ 10.7
Foundational Program Total	\$ 72.1	\$ 56.8	\$ 99.7	\$ 76.2
Challenge Areas				
Childhood Obesity Prevention	\$ 24.4	\$ 60.2	\$ 21.9	\$ 35.5
Climate Variability and Change	\$ 57.9	\$ 14.1	\$ 45.9	\$ 39.3
Food Security	\$ 17.9	\$ 18.9	\$ 33.6	\$ 23.5
Food Safety	\$ 19.5	\$ 24.5	\$ 20	\$ 21.3
Sustainable Bioenergy	\$ 43.6	\$ 63.5	\$ 15.4	\$ 40.9
NIFA Fellowships Grant Program	\$ 6.5	\$ 6.1	\$ 6.1	\$ 6.2
FY Total Invested/Planned	\$241.8	\$244.1	\$242.7	\$242.8



United States
Department of
Agriculture

National Institute
of Food
and Agriculture

Tribal Programs Portfolio Conversation!

**Question # 1:
What have we accomplished
in the last 17 years?**



United States
Department of
Agriculture

National Institute
of Food
and Agriculture

RECORD IS very IMPRESSIVE

TC Research, Equity, Extension and Endowment Awards

121 Awards = \$14.1M in FY 2012

NIFA Grant Programs

Rural Health &
Safety Education

Beginning Farmers
& Ranchers

Agriculture Risk
Management
(\$1.1M)

COLLABORATIONS

1862: FRTEP 36 Proposals (\$6M)

1862s + 1890s: \$5.3M

Examples: AFRI Bioenergy,
Food Security, Fellowships

Small Business Grants

Teaching Awards



United States
Department of
Agriculture

National Institute
of Food
and Agriculture

(Conversation continues.....)

CHALLENGE

How can 1994s become more competitive?

How can 1994s build better partnerships?

What should NIFA be doing to better position your institutions, your faculty, and your students to grow a better future for Indian country?



United States
Department of
Agriculture

National Institute
of Food
and Agriculture

NIFA's Roadmap - Commitment

Research, Education, and Economics Action Plan February 2012

GOAL 6. Education and Science Literacy

Strengthen the science capacity at minority-serving institutions—including 1890 Land Grant Universities, the 1994 Tribal Colleges and Universities, and Hispanic-Serving Institutions (HSIs).



United States
Department of
Agriculture

National Institute
of Food
and Agriculture

Question # 2:

**Vision is a nightmare unless we have
a business plan**

**So, What ought to be our
business plan? Logic Model?**



United States
Department of
Agriculture

National Institute
of Food
and Agriculture

NIFA's Vision & Business Plan!

NIFA is Outcome Driven

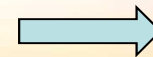
Discovery



Translation



Innovation



Solution

Land Grant
Mission

A Package Deal !!!!



United States
Department of
Agriculture

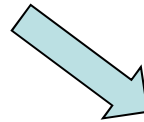
National Institute
of Food
and Agriculture

Recipe for finding Solutions

Technology

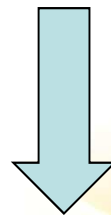
Sociology

investment



HCD
STEM / SAFE

EXTENSION



TRADITIONAL ECOLOGICAL KNOWLEDGE

Geography/Location, Community



United States
Department of
Agriculture

National Institute
of Food
and Agriculture

1994s are UNIQUELY POSITIONED

To become Centers and Repositories of a unique & valuable national resource: **Traditional Ecological Knowledge, BECAUSE;**

Steve Dahlberg – White Earth Tribal & Community College – His passion for the natural sciences and his respect for the ecosystems and culture of the reservations inspire students and build a love of science and not see it as something apart from Indian Culture but a part of Indian Culture.



United States
Department of
Agriculture

National Institute
of Food
and Agriculture

1994s are **UNIQUELY POSITIONED**

To mature rapidly as institutions of **Higher Learning, BECAUSE;**

Adrian Leighton – Saalish Kootenai College – more than doubling the number of American Indian forest rangers and forestry students through Bachelor's program

Pat Aune – United Tribes Technical College – who has helped numerous students begin a career in nutrition and food science with her innovative internship program



United States
Department of
Agriculture

National Institute
of Food
and Agriculture

1994s are **UNIQUELY POSITIONED**

To become a vibrant voice in the **next generation of leaders, educators and scientists, BECAUSE;**

Alessandra Higa – Oglala Lakota College – whose innovative animal science program has helped numerous American Indian young women and girls discover they loved Biology and Math.



United States
Department of
Agriculture

National Institute
of Food
and Agriculture

1994s

1862s

INTERFACE

PUBLIC
VALUE

1890s

Insular
Areas,
ANNH

NIFA

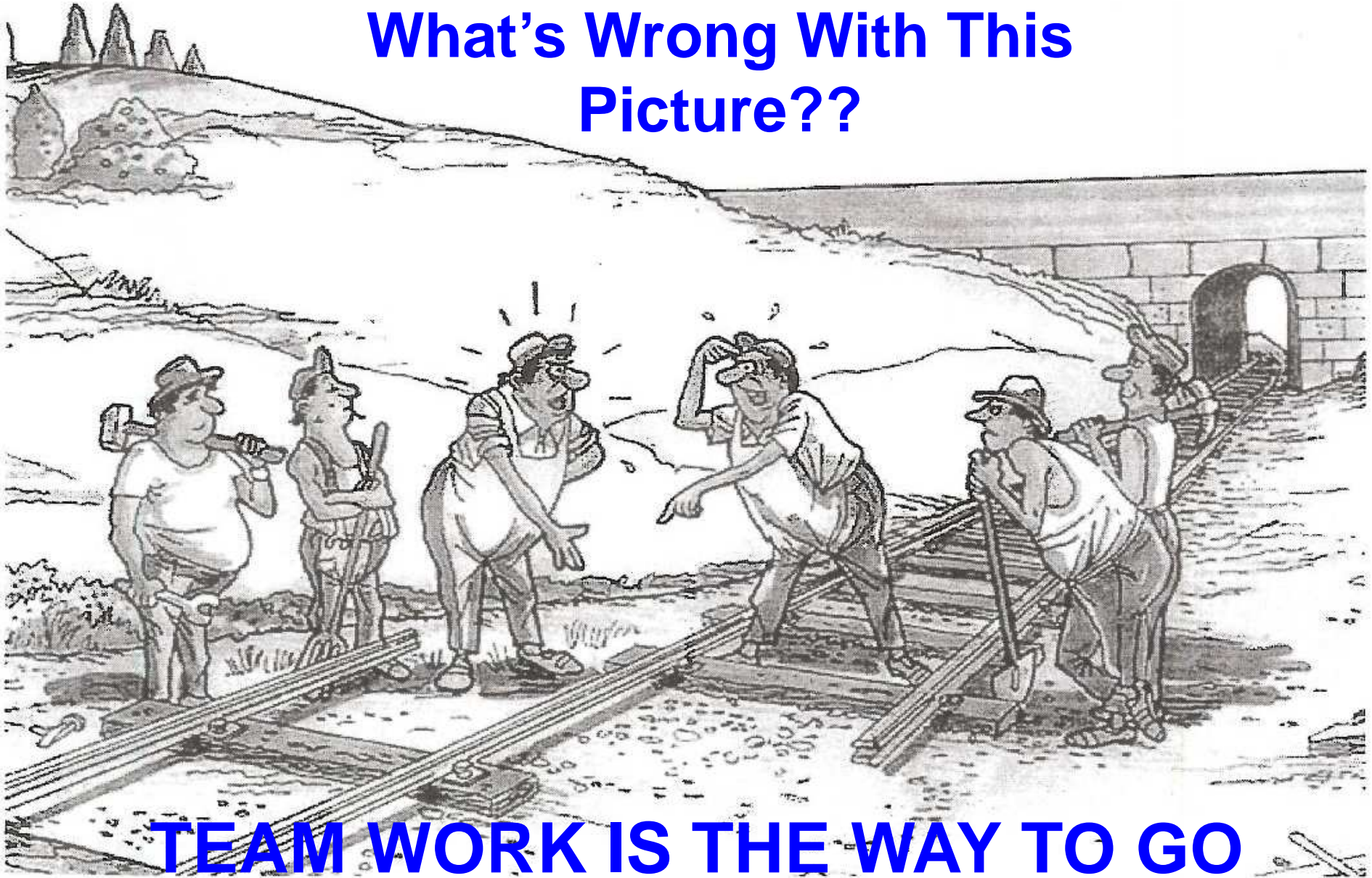
HSIs



United States
Department of
Agriculture

National Institute
of Food
and Agriculture

What's Wrong With This Picture??



TEAM WORK IS THE WAY TO GO



United States
Department of
Agriculture

National Institute
of Food
and Agriculture

We're listening!

- Stakeholder comments
- National Academies of Science AFRI review
- Portfolio analysis



United States
Department of
Agriculture

National Institute
of Food
and Agriculture

CONCLUSION & COMMITMENT

If we want to keep America at the forefront of global competition, we need to make smart investments in education and innovation, leveraging the diverse resources and talent we have, especially in the agricultural sciences.

**Catherine E. Woteki, Ph. D.
Under Secretary for REE and
Chief Scientist
U.S. Department of Agriculture**



United States
Department of
Agriculture

National Institute
of Food
and Agriculture

THANK YOU!!

Questions?