

# Climate Change and Weather Data Comparisons

## “A Comparative Study of State, National and Local Weather Information”

Sarah Zavala & Rose Buffalo Chief  
Nebraska Indian Community College

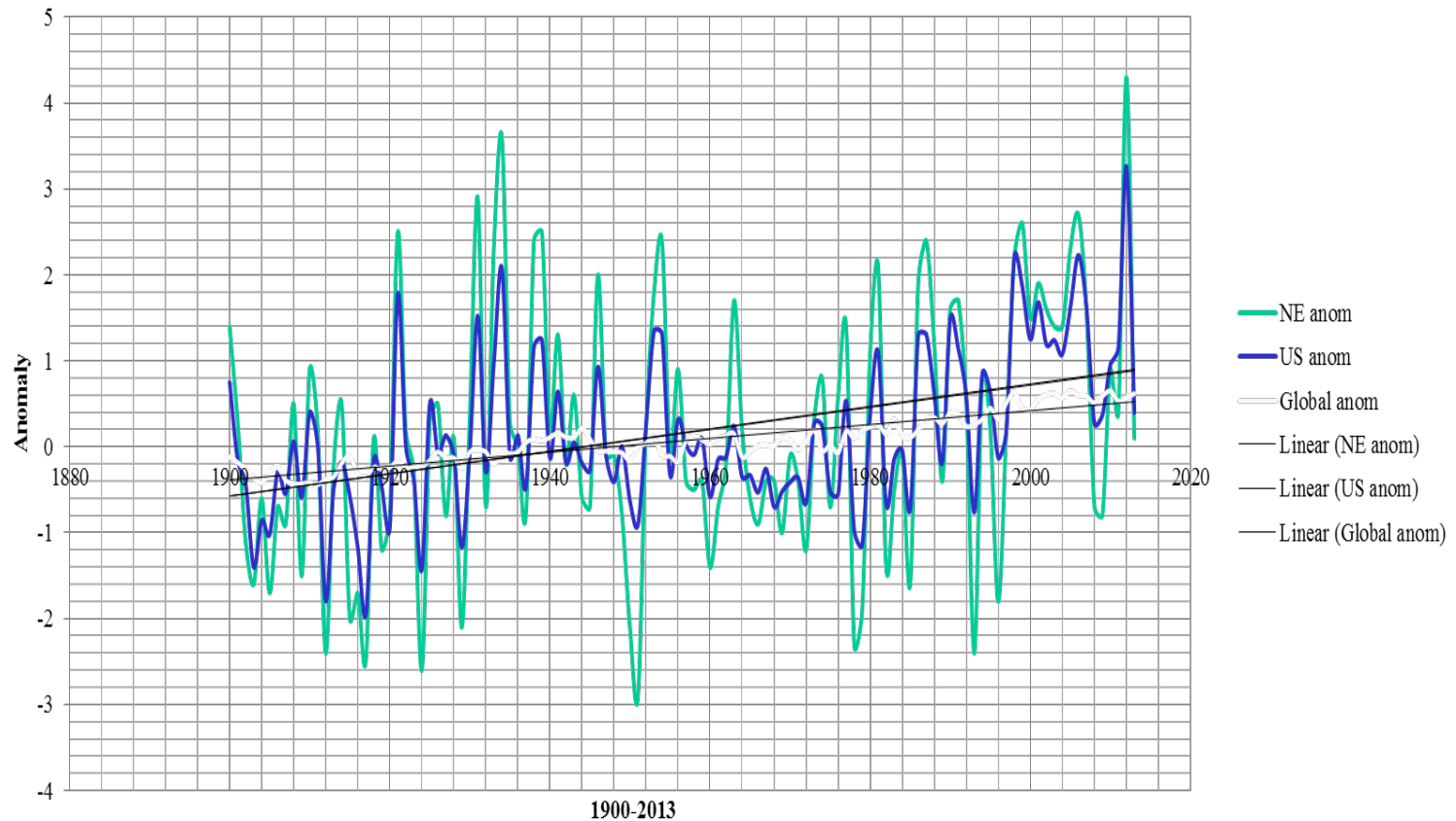




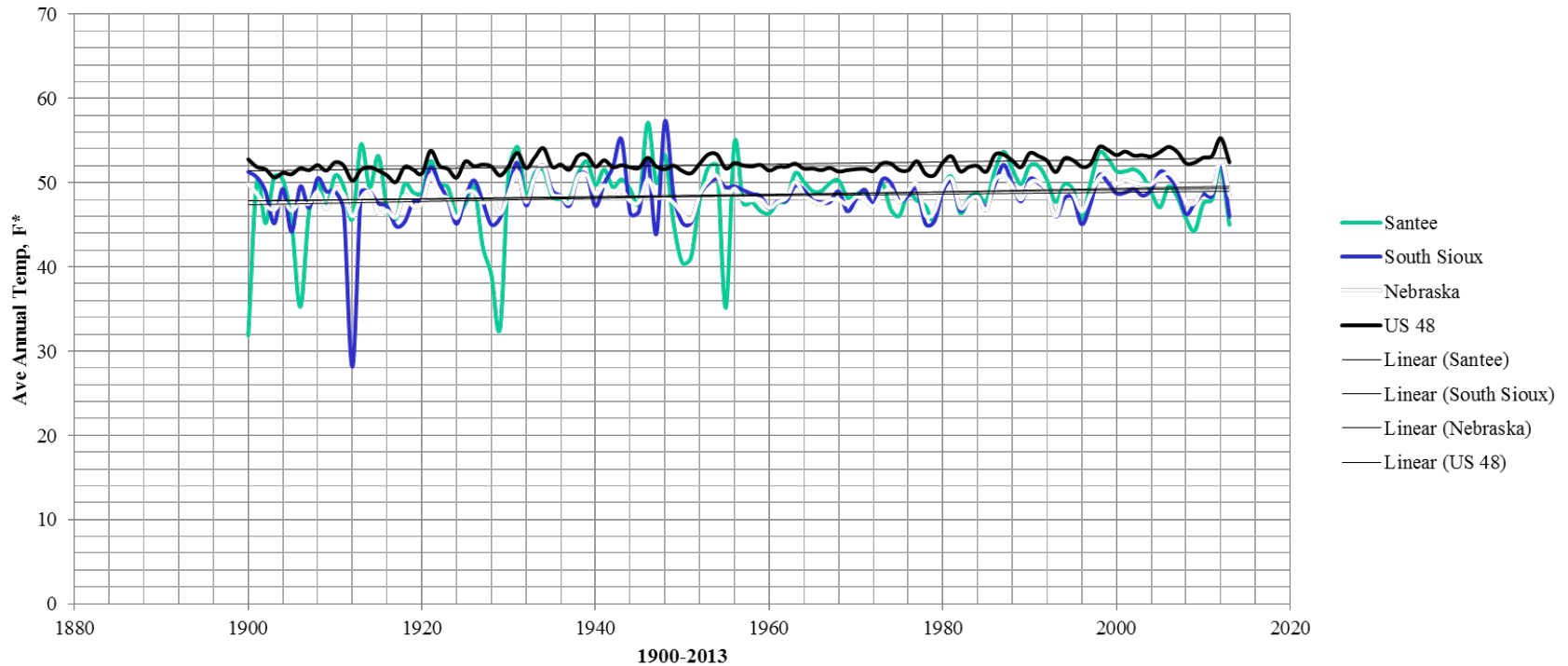
The twin tornadoes that leveled the small town of Pilger, Nebraska on Monday, June 16, 2014, killing two and injuring nearly two dozen, were a horrifying, relatively rare phenomenon. One of the twisters was rated an EF-4 on the Enhanced Fujita Tornado Damage Scale, with winds as high as 200 miles per hour.

# Results

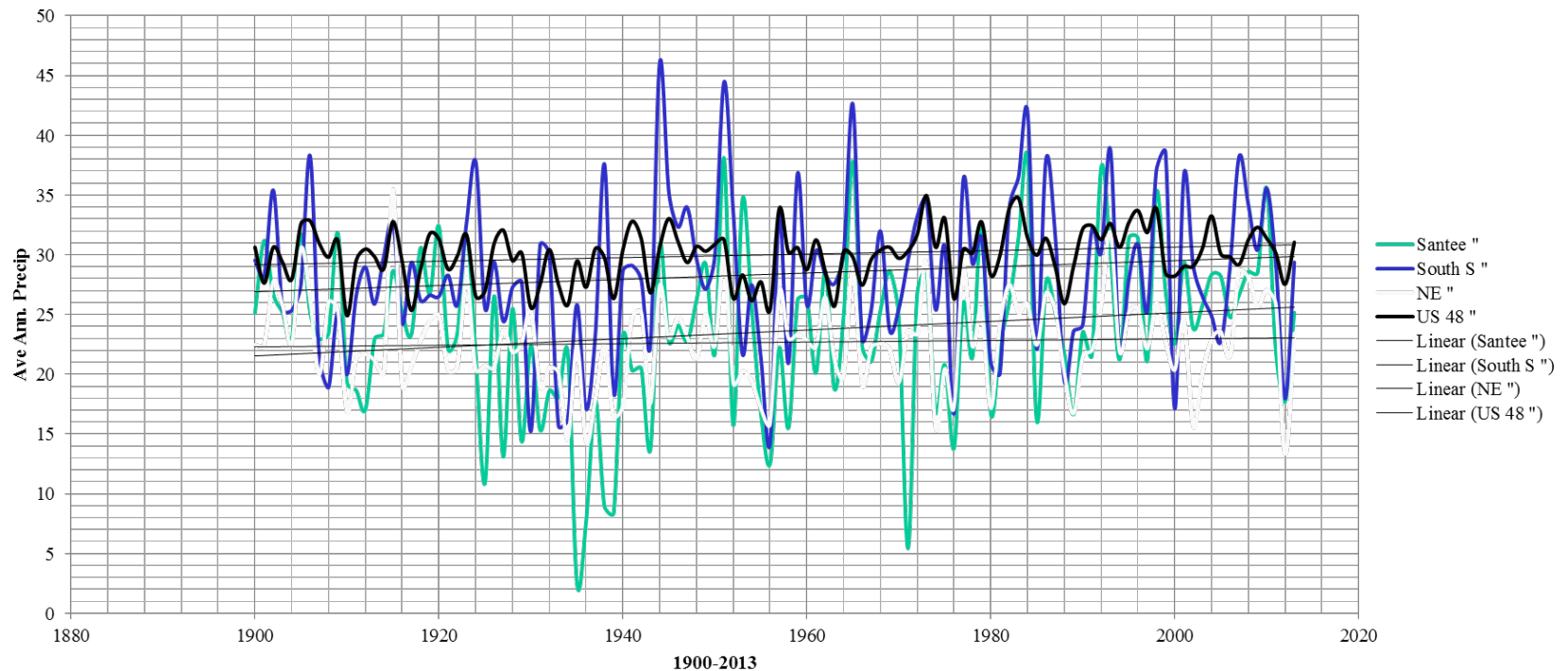
## Temperature Anomalies, 1900-2013, Nebraska, US 48, and Global



# Annual Average Temperatures, 1900-2013, Santee NE, South Sioux City NE, State of Nebraska and the US 48



# Average Annual Precipitation, 1900-2013. Santee NE, South Sioux City NE, State of NE, and US 48 states.



## References

- Climate Prediction Center,  
[www.cpc.ncep.noaa.gov](http://www.cpc.ncep.noaa.gov)
- High Plains Regional  
Climate Center,  
[www.hprcc.unl.edu](http://www.hprcc.unl.edu)
- National Climate Data  
Center, [www.ncdc.noaa.gov](http://www.ncdc.noaa.gov)
- National Drought Mitigation  
Center,  
[www.drought.unl.edu](http://www.drought.unl.edu)

## Acknowledgements

We would like to thank Nebraska Indian Community College, NOAA and High Plains Regional Climate Center and NASA, Nebraska Space Grant for all their help with this project.