

AWARDS MANAGEMENT BRANCH
Carol Languth, Branch Chief
202-401-4986

SECTION I
Susan Bowman, Section Leader
202-401-4326

- AgrAbility/Hazardous Occupations Safety Training
- Alaskan Native/Native Hawaiian-Serving Inst.
- Biodiesel Fuel Education
- Canola/Hesperaloe
- Critical Issues
- Extension Ind. Res. Program
- Higher Education Challenge Grants
- Integrated Methyl Bromide
- Integrated Organic Transitions
- Integrated Pest Management Centers
- Integrated RAMP
- Integrated Water Quality
- Insular Areas
- Pest Management Alternatives
- Renewable Resources
- Rural Development Centers
- Rural Health & Safety
- Smith-Lever Special Needs
- Trade Adjustment Assistance
- Tribal Colleges Ext.
- Tribal Colleges Res. Grants
- Tribal Education Equity

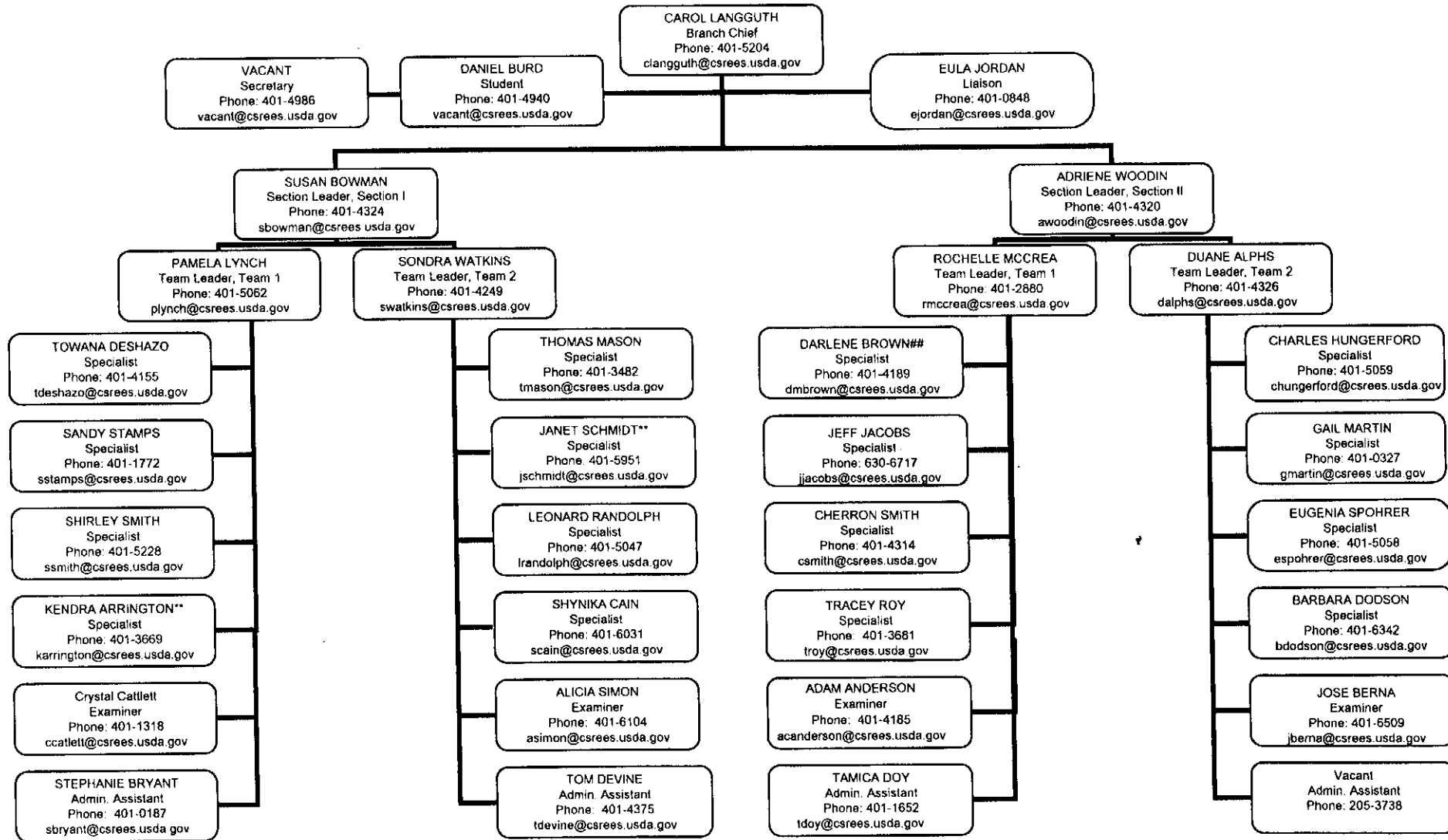
SECTION II
Adriene Woodin, Section Leader
202-401-4320

- Ag Risk Mgt. Education
- Aquaculture Centers
- Biotech Risk Assessment
- Citrus Tristeza
- Hispanic-Serving Institutions Education
- Integrated Crops at Risk
- Integrated Food Safety
- International Science and Education
- Microbial Genome Seq.
- Outreach for Socially Disadvantaged Farmers (2501 Programs)
- Potato Research
- Risk Management Education
- Rural Youth Development
- Secondary and Two-Year Postsecondary Challenge
- Sustainable Ag. – Res./Ext.
- Youth at Risk
- 1890 Facilities
- 1890 Institution Capacity Building

Programs shared by Section I and Section II: Reimbursables, Operating Funds, NRI, Special Grants/Line Items, SBIR I, SBIR II, Graduate Fellowships, Federal Admin - Res/Ext, Innovation Grants, Multicultural Scholars, Community Foods and Homeland Security.

AWARDS MANAGEMENT BRANCH

Branch Main Number: 202-401-4986



** - 1994 Schools ## Facilities Revised: 03/22/2008